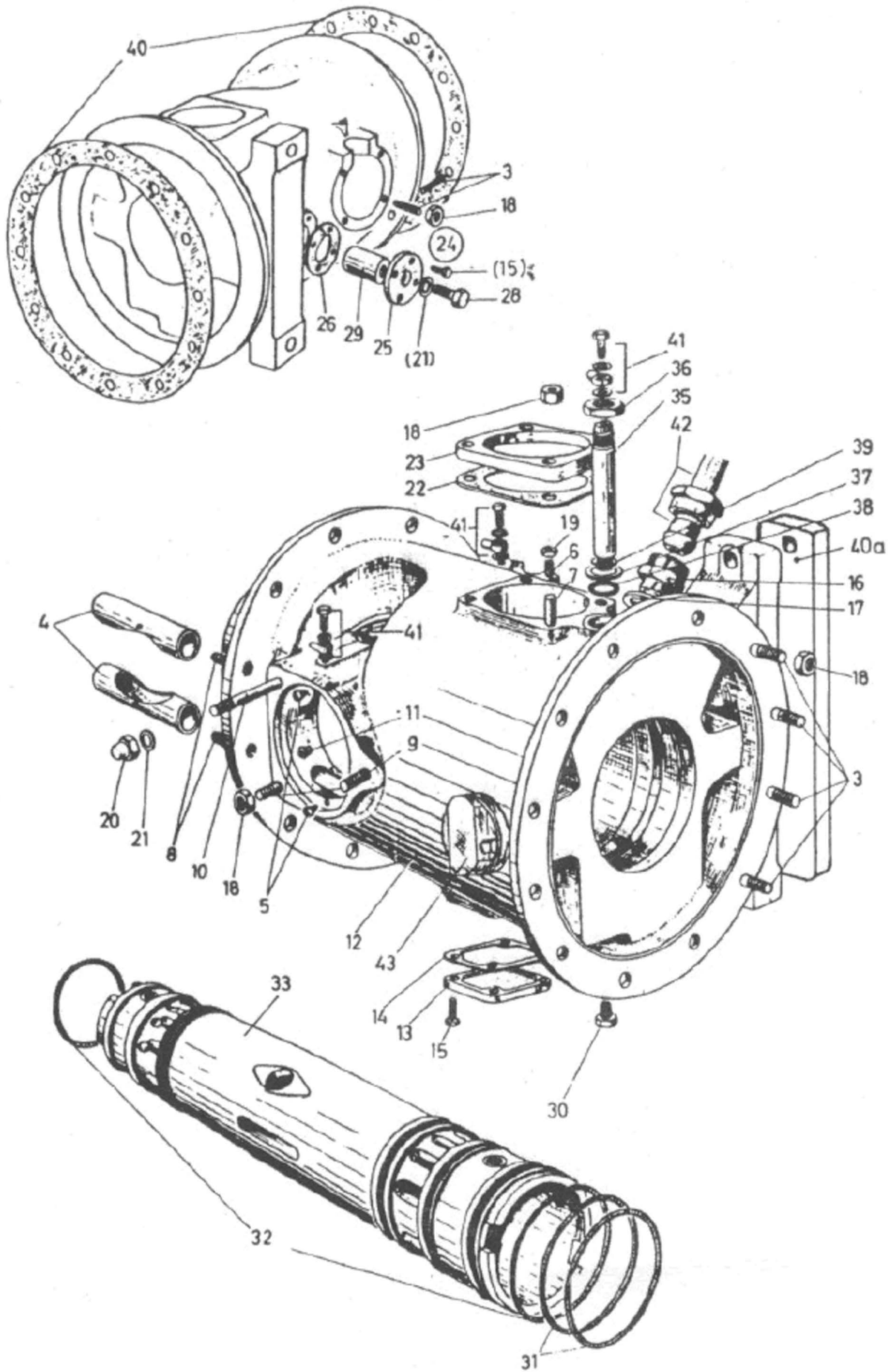


# 1 Motor housing KS



**Motor Housing KS**

\* not illustrated

Item	Description	NO.
1*	Motor Housing with built-in component partsKS	1.00.20
2*	Motor Housing complete KS	1.20.10
3	stud bolt M 12 X 26	1.10.04
4	synchronizing rack guide bushing for 1.20.11	1.10.08
5	bushing set screw for 1.20.11	1.10.09
6	bushing set screw M 8 X 20	1.10.12
7	bushing set screw M 12 X 22	1.10.13
8	bushing set screw M 12 X 32	1.10.14
9	bushing set screw M 12 X 35	1.10.15
10	bushing set screw M 12 X 90	1.10.16
11	insert with pin for 1.20.11	1.10.17
12	Motor Housing with guide bushings	1.20.11
13	cover plate	1.20.12
14	gasket	1.20.13
15	hexagon screw M 8 X 20	1.11.03
16	screw adapter	1.10.06
17	gasket ring A 30 X 36 (copper)	1.10.07
18	hexagon nut M 12	1.10.05
19	hexagon nut M 8	1.10.18
20	cap nut M 12	1.10.21
21	gasket ring A 12 X 18 (copper)	1.11.05
22	exhaust gasket	1.10.02
23	exhaust gasket for pipe dimension 95 X 3,5	1.10.03
24	zinc protection complete	1.11.00
25	plate for zinc protector	1.11.01
26	gasket	1.11.02
(15)	hexagon screw M 8 X 20	1.11.03
28	hexagon screw M 12 X 30	1.11.04
(21)	gasket ring A 12 X 18 (copper)	1.11.05
29	zinc corrosion piece	1.11.06
30	screw plug M 18 X 1,5	11.75.11
31	rubber seal o-ring 129,54 X 5,33	1.13.02
32	rubber seal o-ring 139,3 X 5,7	1.13.03
33	motor cylinder liner K	1.13.11
34*	lubricating oil connection complete	1.16.00
35	lubrication oil connection piece	1.16.01
36	hexagon nut M 20 X 1,5	1.16.02
37	ring disk 21 X 35 X 3	1.16.03
38	rubber seal 20 X 6	1.16.04
39	gasket ring A 12 X 18 (copper)	1.11.05
40	housing gasket	3.10.02
41	lubricatin oil pipe fittings	see 13.00.00
42	cooling water pipe to cooling water sight glass	see 12.91.64

